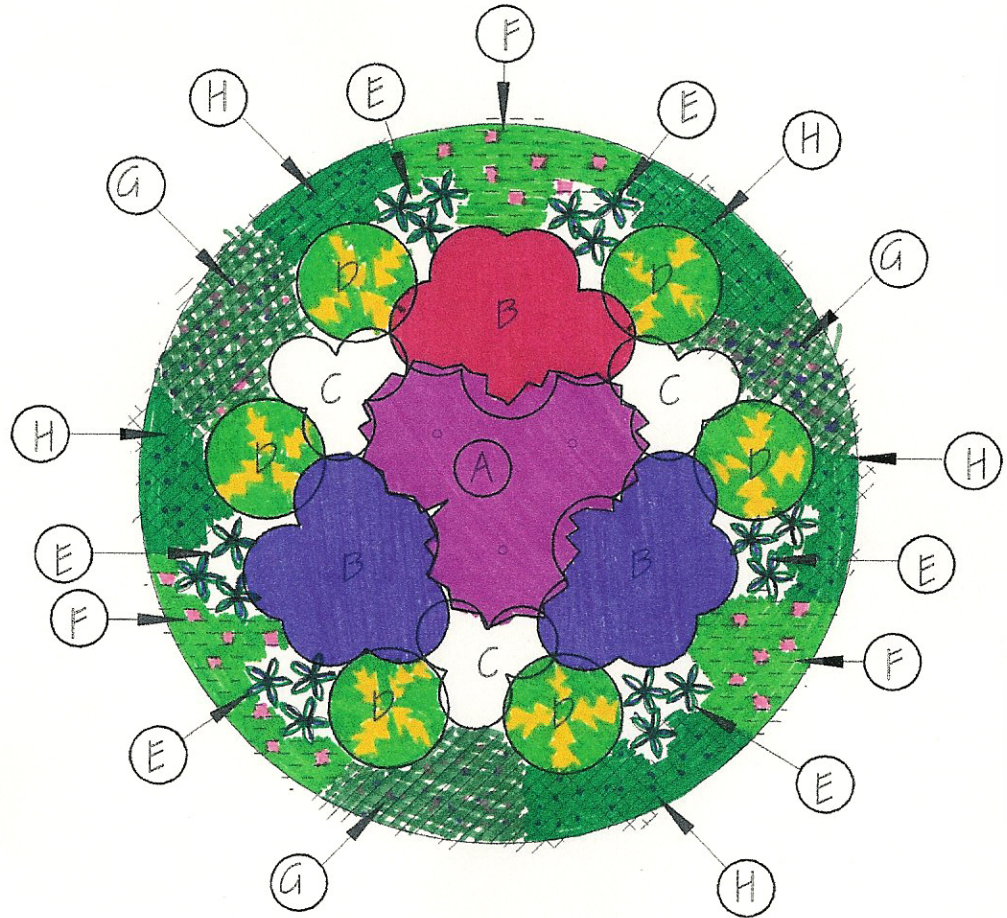


MARK CULLEN'S PERENNIALS SHADE ISLAND BED

NOTE:
PLANT MATERIAL QUANTITIES & PLACEMENT
ARE BASED ON A SCALE OF 1/4" = 1"
WITHIN A 15' DIAMETER ISLAND BED



SUGGESTED PERENNIALS

- A - (3 - 1 gal.) BUGBANE 'BRUNETTE'
- B - (15 - 1 gal.) ASTILBE 'VISIONS' & 'GLUT'
- C - (9 - 1 gal.) FOAMFLOWER 'ROSALIE'
- D - (6 - 1 gal.) HOSTA 'JUNE' & 'MINUTEMAN'
- E - (18 - 1 gal.) FERN 'JAPANESE PAINTED'
- F - (1 flat) LAMIUM 'PINK PEWTER'
- G - (1 flat) LUNGWORT 'RASPBERRY SPLASH' & EXCALIBUR'
- H - (3 - 1 gal.) CORYDALIS 'CHINA BLUE'